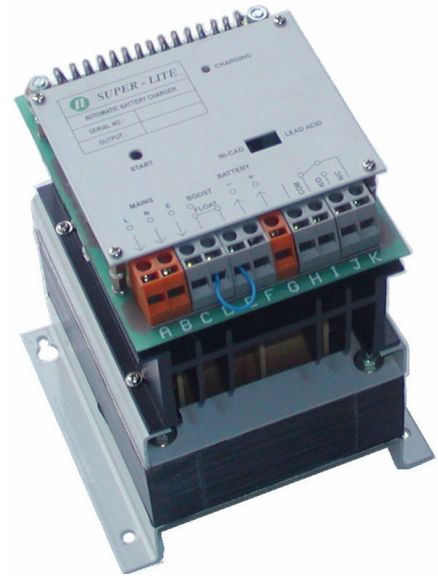
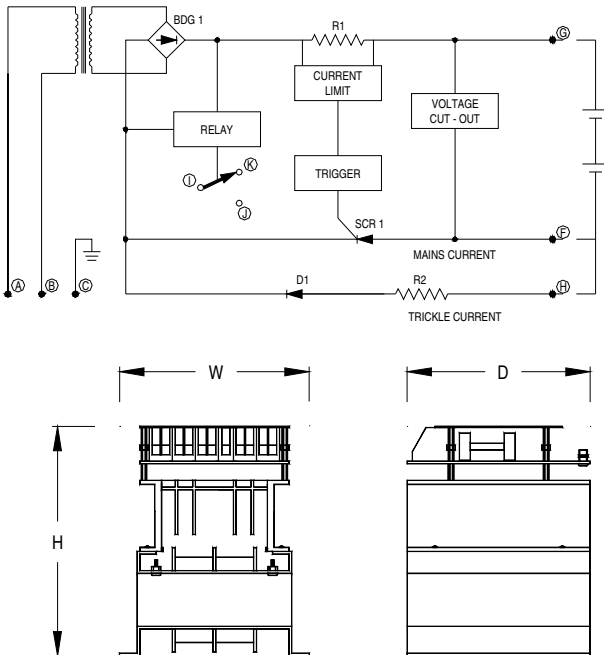


# SUPER-LITE

## CS SERIES Standby Automatic Battery Charger

**COMPACT SERIES**

### General Data:

**Rated Supply Voltage**

- ❖ 240V + / - 10% 50Hz.

**Battery Type**

- ❖ Nickel Cadmium Battery.
- ❖ Lead Acid Battery.

**Battery Voltage**

- ❖ DC 12V, 24V batteries.

**Boost Charge Voltage for 12V / 24 V Batteries**

- ❖ Nickel Cadmium - 15 ~ 15.5 Vdc / 30 ~ 31 Vdc.
- ❖ Lead Acid Battery - 14.5 ~ 15 Vdc / 29 ~ 30 Vdc.

**Float Charge Voltage for 12V / 24 V Batteries**

- ❖ Nickel Cadmium Battery - 14.25 Vdc / 28.5 Vdc.
- ❖ Lead Acid Battery - 13.75 Vdc / 27.5 Vdc.

**Charging Current**

- ❖ Maximum charging current is limited to 5A and 10A respectively.

**Mounting**

- ❖ Metal bracket fabricated from heavy gauge steel with epoxy finishing.
- ❖ Designed for vertical mounting to obtain good conventional cooling.

**Application**

- ❖ Suitable for Standby Generator Set battery charging.

**Control Features**

- ❖ Electronics Current Limiting.
- ❖ Boost Charging facility.
- ❖ Auxiliary Trickle Charging facility.
- ❖ Incorporated with Rectifier Failure Relay

### Technical Specification:

MODEL	Supply Voltage	Output Voltage	Charging Current (A)	Fuse Rating	Dimensions (mm) H x W x D	Weight (Kg)
SABC - CS - 1205	240 AC	DC 12V	5A	8A	170 x 140 x 135	5.30
SABC - CS - 1210	240 AC	DC 12V	10A	15A	170 x 140 x 135	5.80
SABC - CS - 2405	240 AC	DC 24V	5A	8A	170 x 140 x 135	5.80
SABC - CS - 2410	240 AC	DC 24V	10A	15A	215 x 140 x 135	8.60